

# MAHAEXAM<sup>®</sup>

**PRE UPPER PRIMARY SCHOLARSHIP MOCK EXAMINATION - 2018**

**Medium : English**

**Subject : Third Language & Intelligence Test**

**Date : 28/01/2018 Time : 1.30 Hr. Std. : 5th Total Marks : 150**

***Instructions :***

- (1) This question paper will be of 75 questions carrying 2 marks each.
- (2) All questions are compulsory.
- (3) Each question will have Four alternatives. ①②③④
- (4) The answer sheet provided separately along with the question paper will have 4 circles ①②③④. Darken the correct alternative circle completely either with black or blue ink ballpen.  
For example, if the answer for a question is 2, the circle having 2 should be completely made black or blue like this ①●③④
- (5) Any of the answer coloured or marked as follows will get zero mark.  
① ② ③ ④
- (6) Answers marked in pencil will not be considered.
- (7) Answer once given cannot be changed.
- (8) Answers marked in more than one circle will not be considered.
- (9) Time limit of the examination is fixed. So if you do not know the answer to any of the questions, go to the next one. If time remains after attempting the final question attempt the questions left out.

**Subject : Third Language & Intelligence Test**

**\* MODEL ANSWER \***

**Question Paper****PART - I : THIRD LANGUAGE**

---

प्र.1 2) साप - वारूळ

प्र.2 1) कुत्रा-कुत्री

प्र.3 4) असतील शिते तर जमतील भूते

प्र.4 2) ?

प्र.5 3) स्पर्धा होणे

प्र.6 2) अनुराग

प्र.7 1) १४ नोव्हेंबर

प्र.8 3) व्यक्तिचित्र

प्र.9 3) सहा

प्र.10 1) आकाशात

प्र.11 3) इवली-इवली

प्र.12 1) भ

प्र.13 2) बोथट

प्र.14 1) सुमन 4) पुष्प

प्र.15 2) एक होता काव्हॅर

प्र.16 3) व्यासपीठ

प्र.17 1) ,

प्र.18 4) नकाशे

प्र.19 1) मोलमजुरी

प्र.20 3) मिलमध्ये

प्र.21 1) थकवा

प्र.22 2) कळप

प्र.23 4) दिवा

प्र.24 1) संगित प्रकार

प्र.25 3) मोरांचा - केकारव

**PART - II : INTELLIGENCE TEST**

Q.26 4) **O**

Solution :

E V I T C V D **O** R P

Q.27 2) **9, 10, 1, 14, 4**

Solution :

A B C D E	F G H I J	K L M N O	P Q R S T	U V W X Y
		11 12 13 14 15		
A B C D E	P Q R S T	F G H I J		
1 2 3 4 5	6 7 8 9 10	16 17 18 19 20		
	S T A N D			
	9 10 1 14 4			

Q.28 4) **Five**

Q.29 2) **5**

Q.30 2) **Hockey**

Solution :

Others are indoor games.

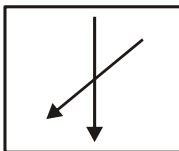
Q.31 3)



Q.32 4) **IX**

Q.33 3) **6987**

Q.34 4)



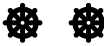
Solution :

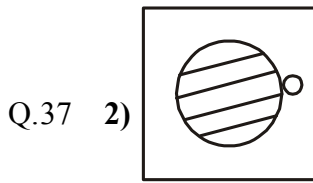
both the arrows in the same direction.

Q.35 4) **17**

Solution :

11	13	9	15	7	<u>17</u>	5
+2	-4	+6	-8	+10	-12	

Q.36 2) 



Solution :

In each figure are horizontal line is added and outer dit (0)is maving in antidockwise diversion.

Q.38 3) 28

Solution :

15      19      21      25      28      31  
          +4      +2      +4      +2      +4

Q.39 1)  $\frac{5}{11}$

Solution :

Nr is increasing by 1 and dr is increasing by 2.

Q.40 1) 44 yrs.

Solution :

Six years ago total age - 20 yrs

∴ Today's total age - 20 + 12 = 32 yrs

∴ Six yrs. hence total age - 32 + 12 = 44 yrs

Q.41 3) parrot

Q.42 2) 12

Solution :

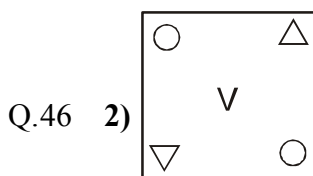
Small triangles = 3 + 2 + 1 = 6

Bigger triangles = 3 + 2 + 1 =  $\frac{6}{12}$

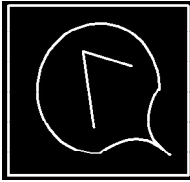
Q.43 1) 2.32

Q.44 4) 4

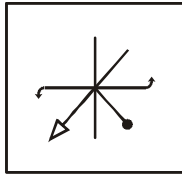
Q.45 1) 6



Q.47 4)



Q.48 2)



Q.49 1)



Q.50 2) **drought**

Solution :

Option (2) is natural calamity.

Q.51 2)



Solution :

Water neglection remains same for option 2.

Q.52 3) **Eagle**

Solution :

High blying bird.

Q.53 1) **skin**

Solution :

Sense organs

Q.54 4) **171**

Solution :

$$19 \times 3 = 57$$

$$19 \times 5 = 95$$

$$19 \times 7 = 133$$

$$\therefore 19 \times 9 = 171$$

Q.55 3) **Ashwin**

Q.56 2) 51

Solution :

$$5^2 + 2 = 25 + 2 = 27$$

$$7^2 + 2 = 49 + 2 = 51$$

Q.57 4) 36

Solution :

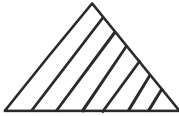
$$95 : 16$$

$$9 - 5 = (4)^2 = 16$$

$$\therefore 82 : ?$$

$$8 - 2 = (6)^2 = 36$$

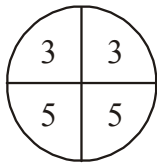
Q.58 1)



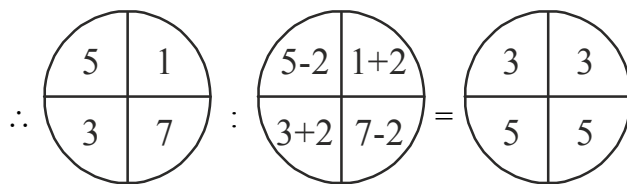
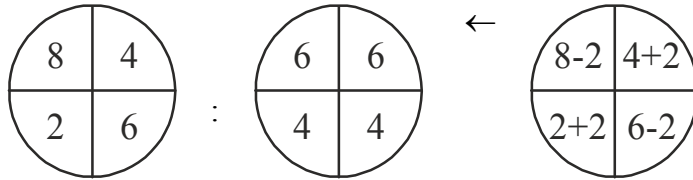
Solution :

Question figure rotates anticlockwise three right angle, the lines inside rotate three right angle.

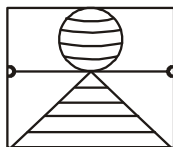
Q.59 1)



Solution :



Q.60 2)



Q.61 4)



Q.62 1) C

Q.63 2) 7

Solution :

$$\triangle = 2$$

$$\circ = 2$$

$$\square = 3$$

$$\text{Total} = 7$$

Q.64 3) 91

Solution :

$$1^3 + 2^3 = 1 + 8 = 9$$

$$2^3 + 3^3 = 8 + 27 = 35$$

$$3^3 + 4^3 = 27 + 64 = 91$$

Q.65 4) 8

Solution :

$$(3 + 5) \div 2 = 8 \div 2 = 4$$

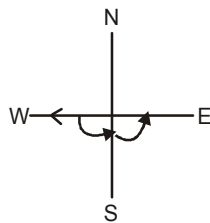
$$(8 + 7) \div 3 = 15 \div 3 = 5$$

$$(7 + 9) \div 2 = 16 \div 2 = 8$$

Q.66 3) Wednesday

Q.67 4) West

Solution :



After taking two turns to the left suhas baces to the east.

Q.68 3) 21

Solution :

$$7 + 9 + 5 = 21$$

Q.69 2) Southeast

Q.70 1) 303028

Solution :

$$347 \rightarrow 3 \times 5 \quad 4 \times 6 \quad 7 \times 7$$

$$654 \rightarrow 6 \times 5 \quad 5 \times 6 \quad 4 \times 7$$



Q.71 3) EUF

Q.72 4) +○□x

Solution :

K I T E

+ ○ □ x

Q.73 2) ◡□x△◡+

Solution :

S U N D A Y

◡ □ x △ ◡ +

Q.74 1) Persuade him not to misbehave again.

Q.75 4) Share the joy with family members.

